

SHANNON'S BRIDGE

ANNUAL
REPORT

2021 / 2022



Shannon's
Bridge



ACKNOWLEDGEMENT

Shannon's Bridge Limited is supported by the Victorian Government through DHHS



CONTENTS

04 ABOUT US

Mission

Constitutional Objectives

History

06 OVERVIEW

Our Team

Our Supporters and Partners

07 GOVERNANCE

Structure & Management

Manager's Report Mr Jeremy McKnight

Director Report (Dr Claire Hepper)

10 FINANCIALS

Financial Statement

12 ART & MINDLESS STITCHING

13 UECP Greater Geelong

14 OTHER IMPORTANT INFORMATION

Acknowledgements

Looking to the Future

How You Can Help

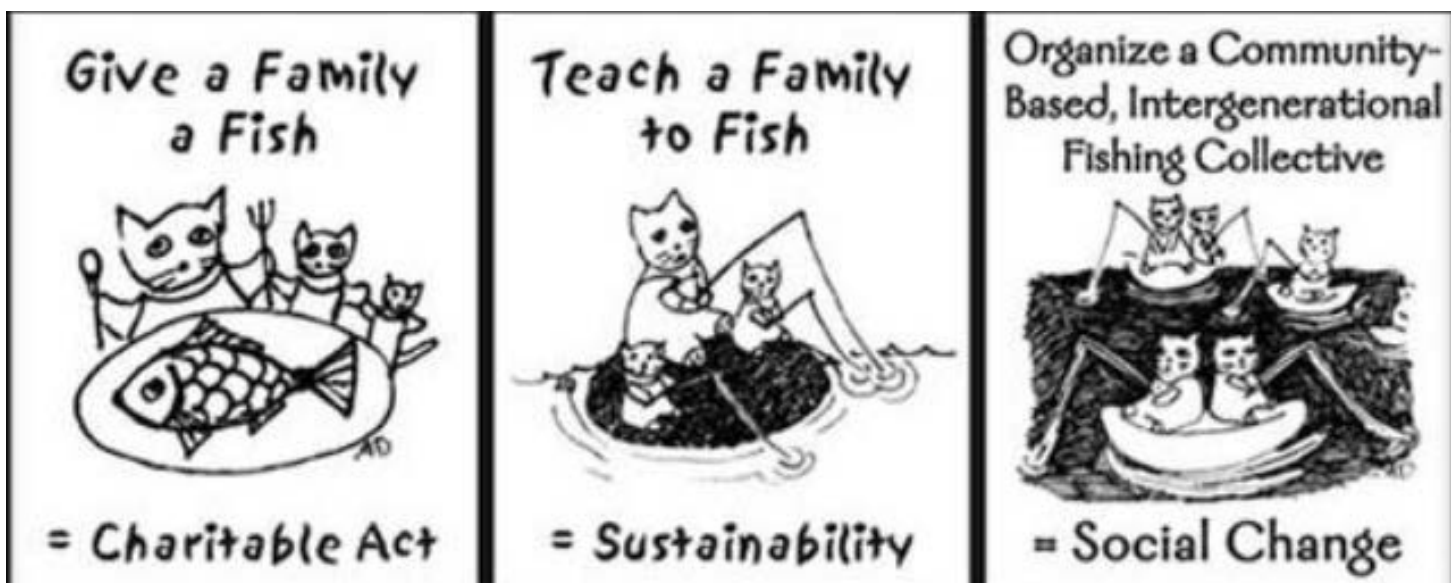
Contact Details



VISION

WHAT SUCCESS LOOKS LIKE

Family and friends having the knowledge and confidence to help achieve and respect peoples' end of life wishes



CONSTITUTIONAL OBJECTIVES

The company is established to be a charity whose purpose is to advance social or public welfare by:

- Improving literacy on death amongst the public,
- Assisting people with Advance Care Plans in transition to their death.
- Linking patients and families with existing palliative care services and supports.
- Training volunteers to provide practical help to the public, patients, carers and their families.
- To promote the education of the public with the transition from life to death.
- To assist people with terminal illnesses and their families and carers in such ways that provide relief from their suffering.



HISTORY

Shannon McKnight was diagnosed with acute lymphoid leukaemia when she was 17. She spent the next two years in hospitals, having intensive treatments. When treatments no longer worked, Shannon just wanted to go home and watch the thunderstorms roll in across the paddocks.

This is where she wanted to be.

Unfortunately, there wasn't after-hours access to specialist palliative care support where Shannon lived with her family. Connecting Shannon with services was vital to help make her wish of staying home a reality.

Shannon's Bridge is named in her honour.

We believe that everyone should have access to excellent palliative care no matter where they live.

Living with a terminal illness can be very difficult. It can be hard to do the ordinary, everyday things, think about appointments or juggle the demands of caring for a loved one. There can be very little left over for the Carers to care for themselves

People want to help, but are often unsure how. **Shannon's Bridge** trains volunteers to assist with arranging social and practical support to people living with end of life issues.



OUR TEAM

DIRECTORS



Mr Jeremy
McKnight



Dr Claire
Hepper



Sr Louise
Hall

SUPPORTERS



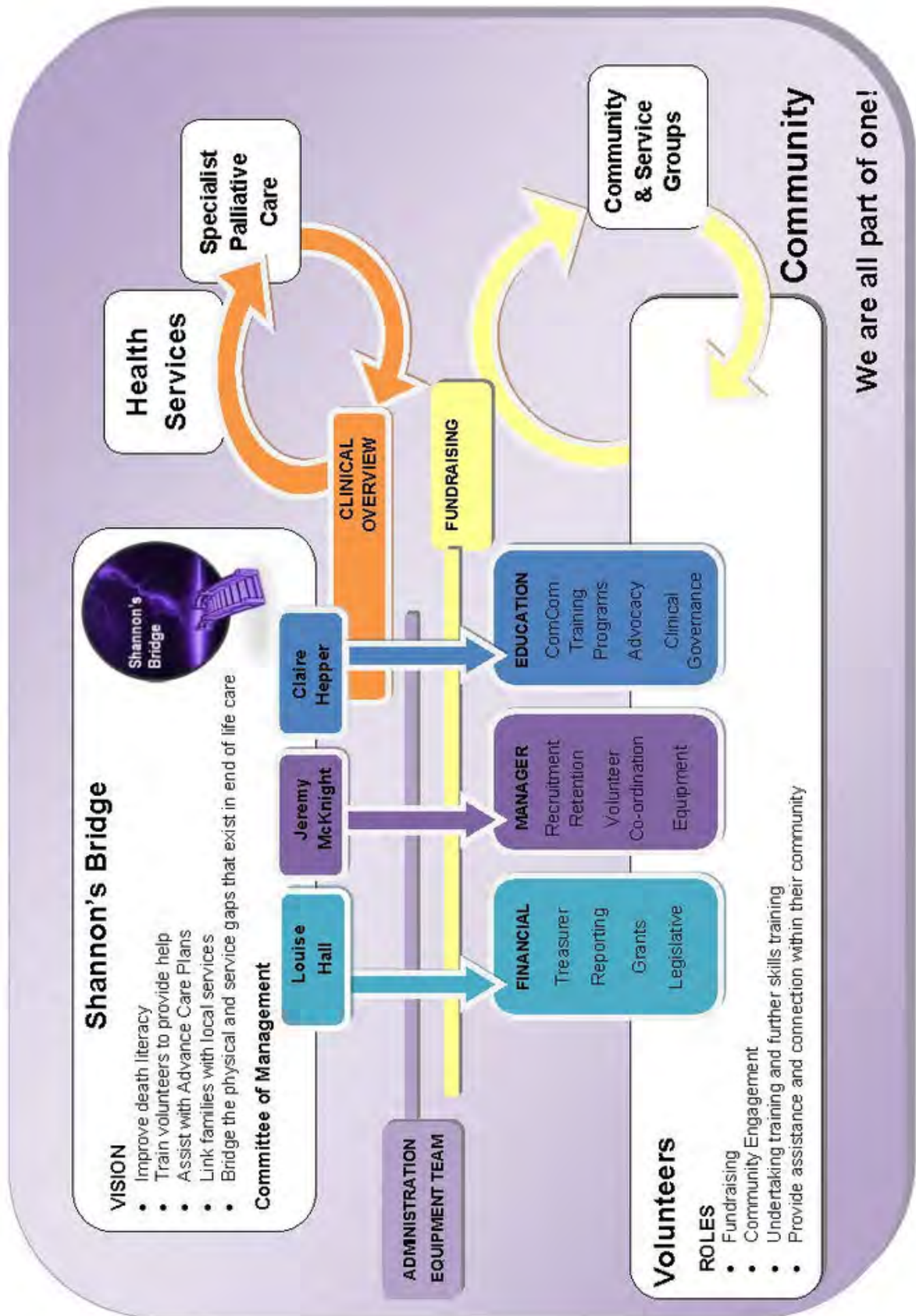
ALFREDTON
ROTARY



OUR VOLUNTEERS

SHANNON'S BRIDGE DOES NOT
WORK WITHOUT OUR
FANTASTIC VOLUNTEERS

GOVERNANCE



NOTE: Director Bree Nurse resigned on 09/05/2022 and Sr Louise Hall elected 10/05/2022.



ANOTHER YEAR OF CHALLENGE

Since Jan 2020, we have all been talking about 'challenges' and 'new normals'. The worldwide impact of COVID-19 is now combined with the Russian-Ukrainian conflict and widespread floods in Australia.

As people struggle to return to some level of social interaction, the charity is still getting daily requests for assistance with accessing equipment. The community need for Shannon's Bridge has continued to increase and we are grateful for our ability to assist others.

Shannon's Bridge has supported more people and communities in more places than ever before. We have been able to do this because of the support of our volunteers.

You might notice the plentiful pictures of wheelchairs and equipment throughout this report. That is because this facet of our work has continued to grow more than any other area. We were excited to be able to support the **Sidina Health Clinic, Zimbabwe** through local Rotary clubs and Michelle Leishman.

We have no recurrent funding for this work and acknowledge the generous support of **Hospice Foundation Geelong** to help us keep up with demand in the Greater Geelong region. You can read more about this work on our website and page 13 of this report.

This only works when we all work together. Thank you for, yet another challenging and rewarding year.

Mr Jeremy McKnight





CHANGE; The only constant

Since our last report, the only thing that has remained the same, is that everything continues to change.

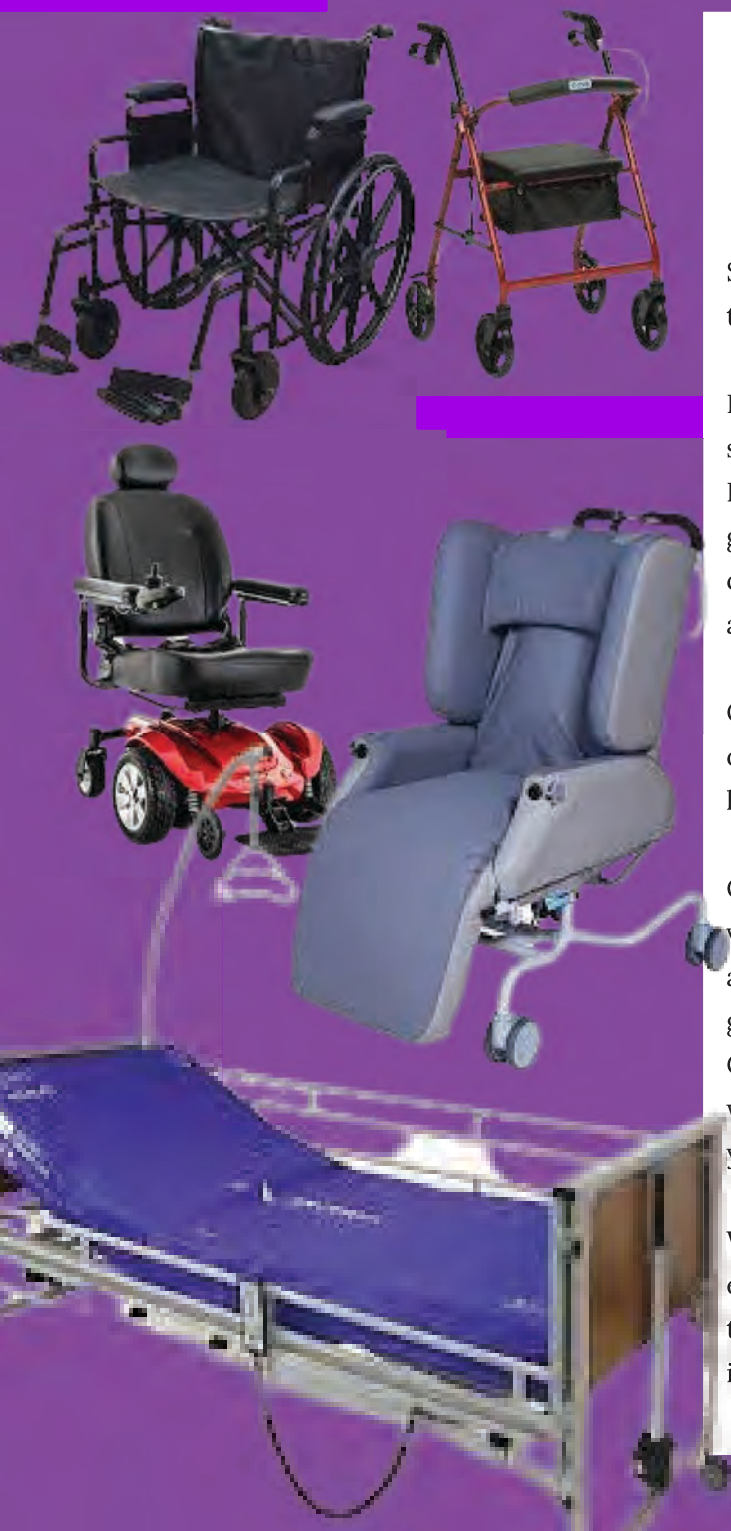
I would like to acknowledge the important work of staff members who have left during this time, Wayne Edwards, Suzanne Cooke and Pat Nurse. We are grateful for their input and assistance during a challenging time to be caring for those caring, dying and grieving.

One of our Directors, Bree Nurse has also moved on to other pursuits and we thank her for advice and sharing her experiences.

Our newest Director, **Sr Louise Hall**, has been a volunteer with Shannon's Bridge since our founding and we are excited to have the benefit of her grassroots expertise and community focus on our Committee of Management. As previously, none of this work happens without our brilliant volunteers - Thank you for being the real constant.

Whilst our activities have been overwhelmingly with equipment and inhome respite requests, it is exciting to see a return to community education and information sessions.

Dr. Claire Hepper



FINANCIALS



Statement of Financial Position

As At 30 June 2021

	Note	2021 \$	2020 \$
ASSETS			
CURRENT ASSETS			
Cash and cash equivalents	5	1,528,099	1,807,177
Trade and other receivables	6	9,886	10,690
TOTAL CURRENT ASSETS		1,537,985	1,817,867
NON-CURRENT ASSETS			
Property, plant and equipment	7	67,137	22,489
Right-of-use assets	8	92,808	85,833
TOTAL NON-CURRENT ASSETS		159,945	108,322
TOTAL ASSETS		1,697,930	1,926,189
LIABILITIES			
CURRENT LIABILITIES			
Lease liabilities	8	39,555	28,266
Trade and other payables	9	21,422	17,608
Other financial liabilities	10	1,067,071	1,498,439
Employee benefits	11	7,392	10,229
TOTAL CURRENT LIABILITIES		1,135,440	1,554,542
NON-CURRENT LIABILITIES			
Lease liabilities	8	56,075	59,719
Employee benefits	11	3,420	1,494
TOTAL NON-CURRENT LIABILITIES		59,495	61,213
TOTAL LIABILITIES		1,194,935	1,615,755
NET ASSETS		502,995	310,434
EQUITY			
Retained earnings		502,995	310,434
TOTAL EQUITY		502,995	310,434

FINANCIALS

Shannon's Bridge Limited

ABN 69 618 021 742

Statement of Profit or Loss and Other Comprehensive Income For the Year Ended 30 June 2021

	2021	2020
	\$	\$
Government funding and other income	591,146	612,114
Client services - consumables	(19,546)	(35,984)
Client services - purchases	-	(12,606)
Consultancy	(118,260)	(127,458)
Depreciation	(48,408)	(37,921)
Employee benefits expense	(163,005)	(216,033)
Other operating expenses	(45,768)	(67,441)
Finance expenses	(3,598)	(3,750)
Profit before income tax	192,561	110,921
Income tax expense	-	-
Profit for the year	192,561	110,921
Other comprehensive income for the year, net of tax	-	-
Total comprehensive income for the year	192,561	110,921

FULL FINANCIAL STATEMENTS ARE AVAILABLE
ON REQUEST AND ON THE CHARITY WEBSITE
shannonsbridge.com

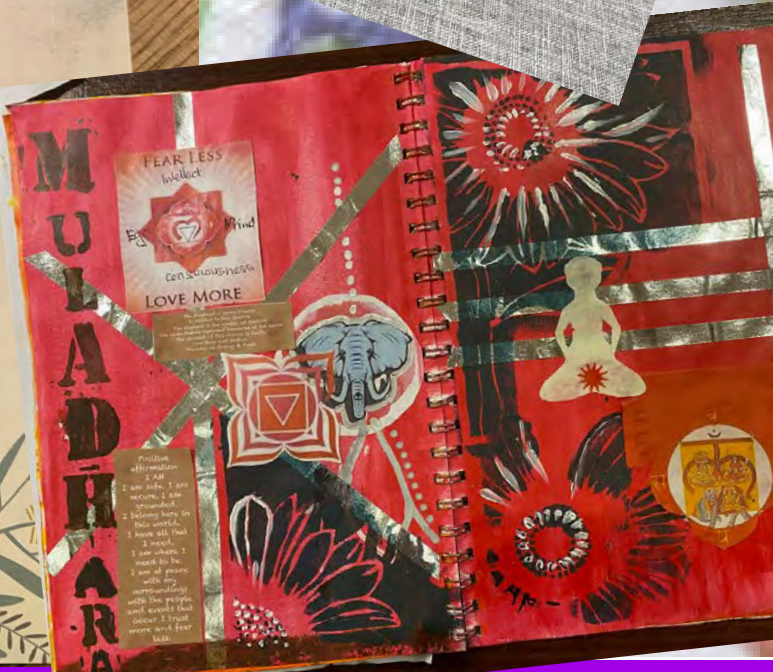
ART & MINDLESS STITCHING

Beyond the practical skills and equipment, Shannon's Bridge volunteers promote 'Care for the Carer' and are proud to host weekly peer-led groups with art therapy principles



Remember to take Care

Compassion is a circle, not a line...
So at the end of a day of giving,
remember to check that you are okay.
For even the sun needs the night to rest,
to ensure its brightness and warmth.



UPSKILLING & EQUIPPING COMMUNITIES PROJECT -- GREATER GEELONG

Background

Throughout COVID restrictions Shannon's Bridge has been supporting more families than ever before. Our volunteers continue to meet the marked increase in requests for assistance and we have provided over \$400,000 worth of loans and donations of equipment in the last financial year to help people be at home for end of life care.

On paper there are palliative care services covering all of Victoria. The reality, however, is that these services are stretched very thinly and cannot always provide everything that is needed at short notice, especially true at the edge of service areas or after hours. By working together, Shannon's Bridge supports the health services and extends their reach.

By increasing the skills and harnessing the energy of the community, the 'Upskilling & Equipping Communities Program' (UECP) has

- Demonstrated improved equity in accessing home-based palliative care
- Circumvented the long waitlists for home care packages, services and equipment
- Assisted specialist palliative care services to better manage their caseload
- Reduced the burden on GPs of managing palliative care without community supports

Greater Geelong UECP

The roll out of the project in the Greater Geelong Region began in late 2021, with key components of

- Training and support of local services clubs to take on essential non-clinical roles in supporting home based end of life care with practical skills.
- Focus on CALD and other vulnerable groups in the region who do not have equity in access to palliative care.
- Providing an 'essential equipment kit' to service clubs or community groups. This is to be loaned out when there is a gap in equipment provision by the formal services and support families to stay at home.
- Education and support of GPs and community nurses to increase their palliative care skills and knowledge of local supports for end of life care.

**We acknowledge the vital support
of Hospice Foundation Geelong in
undertaking this Project.**



ACKNOWLEDGMENTS

There are always so many people to thank and we apologise if we have missed anyone

- Wayne Edwards for designing and fabricating truly brilliant equipment handling aides and numerour donations
- Graeme Lees and Jenny Gregory from ATMP Services for all their social media support and advice
- Di Lehne, Fiona Hocking, Ruth Nunn, Lions Club of Quilters Victoria and all the members of both Mindless Stitching and Art Creations.
- For co-ordinating and managing volunteer activities, an extra special thanks to our volunteers Wendy Coutts, Lorraine Parker, Alan Darrell, Katy Rowberry, David Poole and family
- All out volunteers and supporters for always supporting and encouraging us

Thank You

LOOKING TO THE FUTURE

We will continue the ongoing work in the areas of:

- Individualised support for people and their families
- Training for communities and service providers
- Sensory Garden and Horticulture project
- Music Therapy
- Art Therapy
- Delivery of 'Essential Equipment Kits' to Lions Clubs and other interested groups
- Shannon's Pack creation and delivery to GPs
- Support of people who are or are at risk of homelessness
- Building the Compassionate Community approach nationally and internationally
- Working to improve access to palliative care for underserviced populations including the homeless and correctional services members





HOW YOU CAN HELP

There are many ways you can assist
Contact us to have a chat

Volunteering your time or skills

Make a donation, arrange a bequest

Support an event or fundraising activity

Tell people about us if they need our help

Become a corporate partner

We have deductible gift recipient (DGR) status

If you would like a tax receipt please send us
an email with your details

CONTACT

Shannon's Bridge Ltd, ABN 68 615 831 742
94 Albert Street, Creswick VIC 3363

0448 827 956

shannonsbridge@gmail.com
shannonsbridge.com

DONATIONS

gofundme.com/f/shannons-bridge-palliative-care

Shannon's Bridge Fundraising
BSB: 633 000
Account: 167556174



Shannon's
Bridge

shannonsbridge.com

SHANNON'S
BRIDGE

shannonsbridge@gmail.com